

# Mandrini Multi Lock ZERO FIT con attacco BT e IT Standard **NIKKEN**

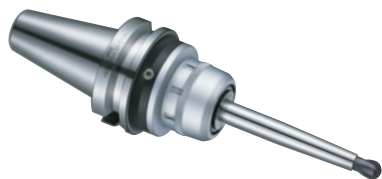


Fig.1

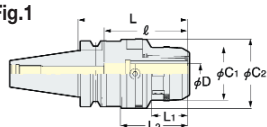
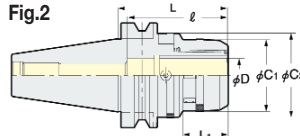
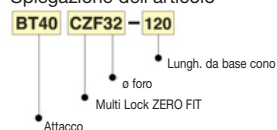


Fig.2



Spiegazione dell'articolo



## BT-CZF

CONO	Articolo	C <sub>1</sub>	C <sub>2</sub>	L	L <sub>1</sub>	L <sub>2</sub>	ℓ	Peso (kg)	Fig.	Bussole
30	BT30-CZF20- 95	51.5	66.5	95	35	68	80	1.5	1	KM20 CCK20
	-CZF25- 95	59.5	74.5	95	35	68	80	1.6		KM25 CCK25
40	BT40-CZF20-105-120	51.5	66.5	105-120	35	64.5	80	2.1-2.5		KM20 CCK20
	-CZF25-105-120	59.5	74.5	105-120	35	68	80	2.4-2.9		KM25 CCK25
	-CZF32-120	69	80.5	120	42	78	105	2.8		KM32 CCK32
50	BT50-CZF20-105-165	54.5	66.5	105-165	35	-	80	4.6-6.0		2
	B-CZF25-105-165	59.5	74.5	105-165	35	-	80	5.0-6.8	KM25 CCK25	
	-CZF32-105-165	69	80.5	105-165	42	-	105	5.3-7.4	KM32 CCK32	

## IT-CZF

CONO	Articolo	C <sub>1</sub>	C <sub>2</sub>	L	L <sub>1</sub>	L <sub>2</sub>	ℓ	Peso (kg)	Fig.	Bussole
40	IT40-CZF20-105-120	51.5	66.5	105-120	35	70	80	2.1-2.5	1	KM20 CCK20
	-CZF25-105-120	59.5	74.5	105-120	35	70	80	2.4-2.9		KM25 CCK25
	-CZF32-120	69	80.5	120	42	85	105	2.8		KM32 CCK32
50	IT50-CZF20-105-165	51.5	66.5	105-165	35	-	80	4.7-6.0	2	KM20 CCK20
	-CZF25-105-165	59.5	74.5	105-165	35	-	80	5.0-6.8		KM25 CCK25
	-CZF32-120-165	69	80.5	105-165	42	-	105	5.37.4		KM32 CCK32

# Mandrini Multi Lock, serie **3LOCK**, ZERO FIT **NIKKEN**

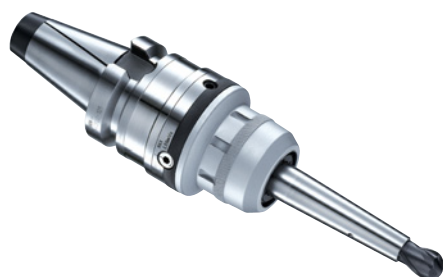


Fig.1

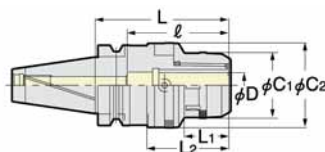
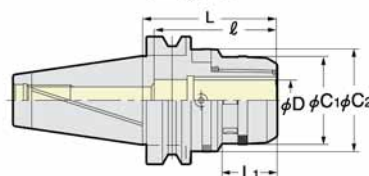
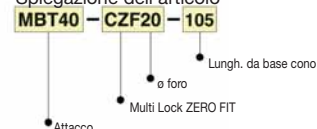


Fig.2



Spiegazione dell'articolo



## MBT-CZF

CONO	Articolo	C <sub>1</sub>	C <sub>2</sub>	L	L <sub>1</sub>	L <sub>2</sub>	ℓ	Peso (kg)	Fig.	Bussole
40	MBT40-CZF20-105,120	51.5	66.5	105-120	35	64.5	80	2.1, 2.5	1	KM20 CCK20
	-CZF25-105,120	59.5	74.5	105-120	35	68	80	2.4, 2.9		KM25 CCK25
	-CZF32-120	69.0	80.5	120	42	81	105	2.8		KM32 CCK32
50	MBT50-CZF20-105,165	51.5	66.5	105-165	35	-	80	4.6, 6.0	2	KM20 CCK20
	-CZF25-105,165	59.5	74.5	105-165	35	-	80	5.0, 6.8		KM25 CCK25
	-CZF32-105,165	69.0	80.5	105-165	42	-	105	5.3, 7.4		KM32 CCK32

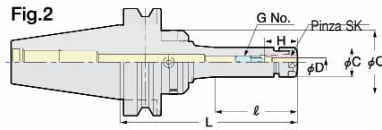
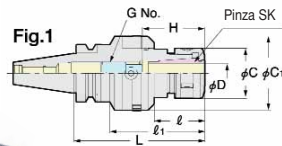
## MIT-CZF

CONO	Articolo	C <sub>1</sub>	C <sub>2</sub>	L	L <sub>1</sub>	L <sub>2</sub>	ℓ	Peso (kg)	Fig.	Bussole
40	MIT40-CZF20-105-120	51.5	66.5	105-120	35	70	80	2.1, 2.5	1	KM20 CCK20
	-CZF25-105-120	59.5	74.5	105-120	35	70	80	2.4, 2.9		KM25 CCK25
	-CZF32-120	69.0	80.5	120	42	85	105	2.8		KM32 CCK32
50	MIT50-CZF20-105-165	51.5	66.5	105-165	35	-	80	4.7, 6.0	2	KM20 CCK20
	-CZF25-105-165	59.5	74.5	105-165	35	-	80	5.0, 6.8		KM25 CCK25
	-CZF32-120-165	69.0	80.5	120-165	42	-	105	5.3, 7.4		KM32 CCK32

\* Le chiavi sono opzionali: CZF20: 9HC22, CZF32: 9HC32  
 \* La chiave per correggere l'errore (9ZFL) è opzionale



# Mandrini Slim Chuck ZERO FIT con attacco BT e IT Standard



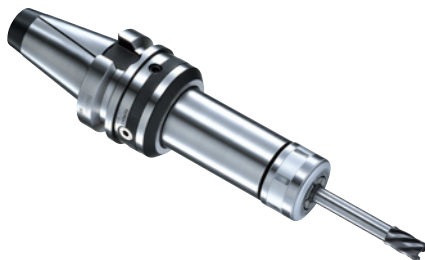
## BT-SZF

CONO	Articolo	D	L	ℓ	ℓ <sub>1</sub>	C	C <sub>1</sub>	H	G	Peso (kg)	Fig.	Pinze
30	BT30-SZF 6- 90	0.7~6.0	90	42	-	19.5	40.5	21~35	SKG- 8	0.9	2	SK 6
	SZF10- 90	17.5~10.0	90	35	61	27.5	48.5	30~50	SKG-12L	1.3	1	SK10
	SZF16-105	27.5~16.00	105	40	76	40.0	59.5	45~65	SKG-18L	1.6	1	SK16
40	BT40-SZF 6- 90,150	.7~6.0	90, 150	37, 60	-	19.5	40.5	21~35	SKG- 8	1.3, 1.7	2	SK 6
	SZF10- 90,150	17.5~10.0	90, 150	37, 97	-	27.5	48.5	30~50	SKG-12L	1.5, 1.9	2	SK10
	SZF16- 90,150	27.5~16.0	90, 150	37, 97	-	40.0	59.5	40~70	SKG-18L	1.8, 2.2	2	SK16
	SZF25-120,150	16.0~25.4	120, 150	55, 86	84,114	55.0	66.5	55~85	SKG- 28	2.4, 2.9	1	SK25
50	BT50-SZF 6-105,165	0.7~6.0	105, 165	41, 63	-	19.5	40.5	21~35	SKG- 8	4.0, 4.2	2	SK 6
	SZF10-105,165	17.5~10.0	105, 165	41, 101	-	27.5	48.5	30~50	SKG- 12L	4.5, 4.9	2	SK10
	SZF16-105,165	27.5~16.0	105, 165	41, 101	-	40.0	59.5	40~70	SKG- 18L	5.0, 5.4	2	SK16
	SZF25-120,165	16.0~25.4	135, 165	71, 101	-	55.0	66.5	55~85	SKG- 28	5.8, 6.0	2	SK25

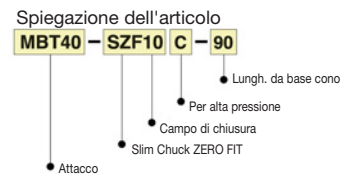
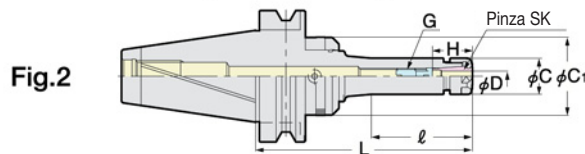
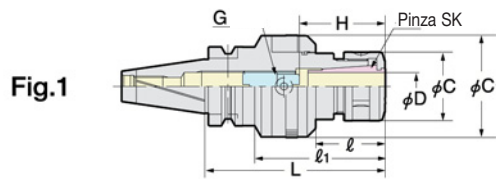
## IT-SZF

CONO	Articolo	D	L	ℓ	ℓ <sub>1</sub>	C	C <sub>1</sub>	H	G	Peso (kg)	Fig.	Pinze
40	IT40-SZF 6- 90,150	0.7~6.0	90, 150	45, 89	-	19.5	40.5	21~35	SKG- 8	1.3, 1.7	2	SK 6
	SZF10-120,150	17.5~10.0	120, 150	57, 87	-	27.5	48.5	30~50	SKG-12L	1.6, 1.9	2	SK10
	SZF16-120,150	27.5~16.0	120, 150	51, 81	-	40.0	59.5	40~70	SKG-18L	1.9, 2.2	2	SK16
	SZF25-120,150	16.0~25.4	120, 150	49, 79	85,115	55.0	66.5	55~85	SKG- 28	2.4, 2.9	1	SK25
50	IT50-SZF 6-105,165	0.7~6.0	105, 165	60, 67	-	19.5	40.5	21~35	SKG- 8	4.0, 4.2	2	SK 6
	SZF10-105,165	17.5~10.0	105, 165	60, 65	-	27.5	48.5	30~50	SKG-12L	4.5, 4.9	2	SK10
	SZF16-105,165	27.5~16.0	105, 165	60, 120	-	40.0	59.5	40~70	SKG-18L	5.0, 5.4	2	SK16
	SZF25-120,165	16.0~25.4	120, 165	75, 120	-	55.0	66.5	55~85	SKG- 28	5.7, 6.0	2	SK25

# Mandrini Slim Chuck, serie 3LOCK ZERO FIT



La foto illustra il mandrino con la ghiera J



## MBT-SZF

CONO	ARTICOLO	D	L	ℓ	ℓ <sub>1</sub>	C	C <sub>1</sub>	H	G	Peso (kg)	Fig.	Pinze
40	MBT40-SZF 6C- 90,150	0.7~6.0	90, 150	37, 60	-	19.5	40.5	26~31	SKG 6- 6HG	1.3, 1.7	2	SK 6
	SZF10C- 90,150	17.5~10.0	90, 150	37, 97	-	27.5	48.5	35~41	SKG10-10HG	1.6, 1.9		SK10
	SZF16C- 90,150	27.5~16.0	90, 150	37, 97	-	40.0	59.5	45~57	SKG16-12HG	1.8, 2.2	SK16	
	SZF25C-120,150	16.0~25.4	120, 150	55, 86	84,114	55.0	66.5	60~65	SKG25-18HGD	2.4, 2.9	1	SK25
50	MBT50-SZF 6C-105,165	0.7~6.0	105, 165	41, 63	-	19.5	40.5	26~31	SKG 6- 6HG	4.0, 4.2	2	SK 6
	SZF10C-105,165	17.5~10.0	105, 165	41, 101	-	27.5	48.5	35~41	SKG10-10HG	4.5, 4.9		SK10
	SZF16C-105,165	27.5~16.0	105, 165	41, 101	-	40.0	59.5	45~57	SKG16-12HG	5.0, 5.4	SK16	
	SZF25C-135,165	16.0~25.4	135, 165	71, 101	-	55.0	66.5	60~70	SKG25-24HG	5.8, 6.0	1	SK25

## MIT-SZF

CONO	ARTICOLO	D	L	ℓ	ℓ <sub>1</sub>	C	C <sub>1</sub>	H	G	Peso (kg)	Fig.	Pinze
40	MIT40-SZF 6C- 90,150	0.7~6.0	90, 150	45, 89	-	19.5	40.5	26~31	SKG 6- 6HG	1.3, 1.7	2	SK 6
	SZF10C-120,150	17.5~10.0	120, 150	57, 87	-	27.5	48.5	35~41	SKG10-10HG	1.6, 1.9		SK10
	SZF16C-120,150	27.5~16.0	120, 150	51, 81	-	40.0	59.5	45~57	SKG16-12HG	1.9, 2.2	SK16	
	SZF25C-120,150	16.0~25.4	120, 150	49, 79	85,115	55.0	66.5	60~65	SKG25-18HGD	2.4, 2.9	1	SK25
50	MIT50-SZF 6C-105,165	0.7~6.0	105, 165	60, 67	-	19.5	40.5	26~31	SKG 6- 6HG	4.0, 4.2	2	SK 6
	SZF10C-105,165	17.5~10.0	105, 165	60, 65	-	27.5	48.5	35~41	SKG10-10HG	4.5, 4.9		SK10
	SZF16C-105,165	27.5~16.0	105, 165	60, 120	-	40.0	59.5	45~57	SKG16-12HG	5.0, 5.4	SK16	
	SZF25C-120,165	16.0~25.4	120, 165	75, 120	-	55.0	66.5	60~70	SKG25-24HG	5.7, 6.0	1	SK25

ZERO FIT