

**NOVITÀ**



■ Nuovi mandrini antivibranti “MAJOR DREAM” per il calettamento a caldo di utensili in metallo duro.

Attacchi: **2LOCK** BT e IT  
HSK 50A - 63A e 100A

■ Prolunghe cilindriche “MASAMUNE” per calettamento a caldo

- Durezza HV960 (~70HRC)
- Grande resistenza alla corrosione
- Montate sui mandrini Multilock, Slim Chuck, Mini-Mini Chuck, VC-Holder e Dream Cut, le prolunghe “MASAMUNE” sono la soluzione ideale per gli stampisti.

## Mandrini integrali "MAJOR DREAM" per calettamento a caldo con attacco **2LOCK** BT e IT

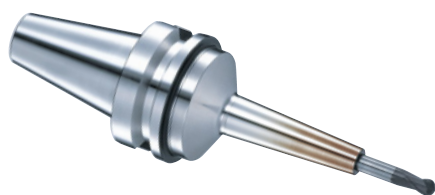


Fig. 1

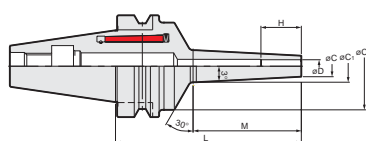
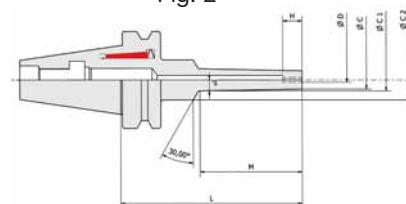


Fig. 2



**MDMS - - S** (con forte rastremazione, vedi fig. 1)

CONO	Articolo	øD	øC	øC <sub>1</sub>	øC <sub>2</sub>	L	M	H
<b>No.30</b>	<b>NBT30-MDMS 3S- 80, -105</b>	3	6	10.2, 12.8	41	80, 105	42, 67	10
	<b>-MDMS 4S- 80, -105</b>	4	7	11.2, 13.8		80, 105	42, 67	13
	<b>-MDMS 6S- 80, -105</b>	6	9	13.2, 15.8		80, 105	42, 67	19
	<b>-MDMS 8S- 80, -105</b>	8	13	17.2, 19.8		80, 105	42, 67	25
	<b>-MDMS10S- 80</b>	10	16	20.2		80	42	31
<b>No.40</b>	<b>NBT40-MDMS 3S- 90, -115</b>	3	6	10.2, 12.8	54	90, 115	42, 67	10
	<b>-MDMS 4S- 90, -115</b>	4	7	11.2, 13.8		90, 115	42, 67	13
	<b>-MDMS 6S- 90, -115</b>	6	9	13.2, 15.8		90, 115	42, 67	19
	<b>-MDMS 8S- 90, -115</b>	8	13	17.2, 19.8		90, 115	42, 67	25
	<b>-MDMS10S- 90, -115</b>	10	16	20.2, 22.8		90, 115	42, 67	31
	<b>-MDMS12S- 90, -115</b>	12	19	23.2, 25.8		90, 115	42, 67	31
<b>No.50</b>	<b>NBT50-MDMS 3S-130</b>	3	6	12.8	54	130	67	10
	<b>-MDMS 4S-105, -130</b>	4	7	11.2, 13.8		105, 130	42, 67	13
	<b>-MDMS 6S-105, -130</b>	6	9	13.2, 15.8		105, 130	42, 67	19
	<b>-MDMS 8S-105, -130</b>	8	13	17.2, 19.8		105, 130	42, 67	25
	<b>-MDMS10S-105, -130</b>	10	16	20.2, 22.8		105, 130	42, 67	31
	<b>-MDMS12S-105, -130</b>	12	19	23.2, 25.8		105, 130	42, 67	31

**MDMS - - R** (con bassa rastremazione, vedi fig. 2)

CONO	Articolo	øD	øC	øC <sub>1</sub>	øC <sub>2</sub>	L	M	H
<b>No.30</b>	<b>NBT30-MDMS 4R- 80, -105</b>	4	10	14.2, 16.8	41	80, 105	42, 67	13
	<b>-MDMS 6R- 80, -105</b>	6	12	16.2, 18.8		80, 105	42, 67	19
	<b>-MDMS 8R- 80, -105</b>	8	18	22.2, 24.8		80, 105	42, 67	25
	<b>-MDMS10R- 80, -105</b>	10	22	26.2, 28.8		80, 105	42, 67	31
<b>No.40</b>	<b>NBT40-MDMS 4R- 90</b>	4	10	14.2	54	90	42	13
	<b>-MDMS 6R- 90, -115</b>	6	12	16.2, 18.8		90, 115	42, 67	19
	<b>-MDMS 8R- 90, -115</b>	8	18	22.2, 24.8		90, 115	42, 67	25
	<b>-MDMS10R- 90, -115</b>	10	22	26.2, 28.8		90, 115	42, 67	31
	<b>-MDMS12R- 90, -115</b>	12	26	30.2, 32.8		90, 115	42, 67	31
<b>No.50</b>	<b>NBT50-MDMS 6R-105, -130</b>	6	12	16.2, 18.8	54	105, 130	42, 67	19
	<b>-MDMS 8R-105, -130</b>	8	18	22.2, 24.8		105, 130	42, 67	25
	<b>-MDMS10R-105, -130</b>	10	22	26.2, 28.8		105, 130	42, 67	31
	<b>-MDMS12R-105, -130</b>	12	26	30.2, 32.8		105, 130	42, 67	31

A richiesta si possono avere mandrini per frese con gambo ø 16 e ø 20

# Mandrini integrali "MAJOR DREAM"

NOVITÀ

NIKKEN

## per calettamento a caldo con attacco HSK50A, HSK63A e HSK100A

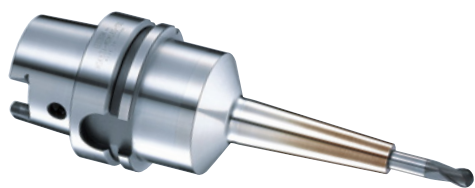


Fig. 1

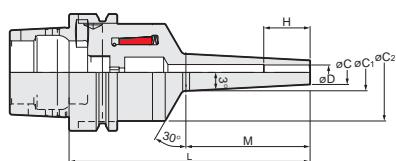
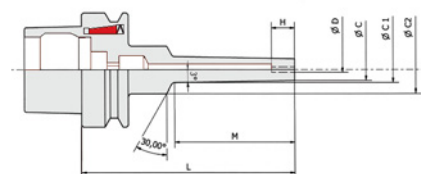


Fig. 2



**MDMS - - S** (con forte rastremazione, vedi fig. 1)

CONO	Articolo	øD	øC	øC <sub>1</sub>	øC <sub>2</sub>	L	M	H
HSK50A	HSK 50A-MDMS 3S-100, -125	3	6	10.2, 12.8	41.6	100, 125	42, 67	10
	-MDMS 4S-100, -125	4	7	11.2, 13.8		100, 125	42, 67	13
	-MDMS 6S-100, -125	6	9	13.2, 15.8		100, 125	42, 67	19
	-MDMS 8S-100, -125	8	13	17.2, 19.8		100, 125	42, 67	25
HSK63A	HSK 63A-MDMS 3S-105, -130	3	6	10.2, 12.8	52.4	105, 130	42, 67	10
	-MDMS 4S-105, -130	4	7	11.2, 13.8		105, 130	42, 67	13
	-MDMS 6S-105, -130	6	9	13.2, 15.8		105, 130	42, 67	19
	-MDMS 8S-105, -130	8	13	17.2, 19.8		105, 130	42, 67	25
	-MDMS10S-105, -130	10	16	20.2, 22.8		105, 130	42, 67	31
	-MDMS12S-105, -130	12	19	23.2, 25.8		105, 130	42, 67	31
HSK100A	HSK100A-MDMS 3S-150	3	6	12.8	54	150	67	10
	-MDMS 4S-125, -150	4	7	11.2, 13.8		125, 150	42, 67	13
	-MDMS 6S-125, -150	6	9	13.2, 15.8		125, 150	42, 67	19
	-MDMS 8S-125, -150	8	13	17.2, 19.8		125, 150	42, 67	25
	-MDMS10S-125, -150	10	16	20.2, 22.8		125, 150	42, 67	31
	-MDMS12S-125, -150	12	19	23.2, 25.8		125, 150	42, 67	31

**MDMS - - R** (con bassa rastremazione, vedi fig. 2)

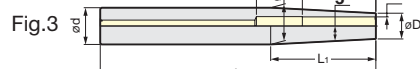
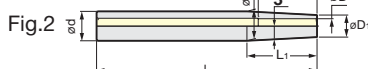
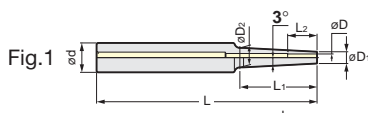
CONO	Articolo	øD	øC	øC <sub>1</sub>	øC <sub>2</sub>	L	M	H
HSK50A	HSK 50A-MDMS 4R-100, -125	4	10	14.2, 16.8	41.6	100, 125	42, 67	13
	-MDMS 6R-100, -125	6	12	16.2, 18.8		100, 125	42, 67	19
	-MDMS 8R-100, -125	8	18	22.2, 24.8		100, 125	42, 67	25
	-MDMS10R-100	10	22	26.2		100	42	31
HSK63A	HSK 63A-MDMS 4R-105	4	10	14.2	52.4	105	42	13
	-MDMS 6R-105, -130	6	12	16.2, 18.8		105, 130	42, 67	19
	-MDMS 8R-105, -130	8	18	22.2, 24.8		105, 130	42, 67	25
	-MDMS10R-105, -130	10	22	26.2, 28.8		105, 130	42, 67	31
	-MDMS12R-105, -130	12	26	30.2, 32.8		105, 130	42, 67	31
HSK100A	HSK100A-MDMS 6R-125, -150	6	12	16.2, 18.8	54	125, 150	42, 67	19
	-MDMS 8R-125, -150	8	18	22.2, 24.8		125, 150	42, 67	25
	-MDMS10R-125, -150	10	22	26.2, 28.8		125, 150	42, 67	31
	-MDMS12R-125, -150	12	26	30.2, 32.8		125, 150	42, 67	31

Per HSK100A è possibile avere mandrini per frese con gambo ø 16 e ø 20

# Prolunghe per calettamento a caldo con gambo cilindrico "MASAMUNE"

NIKKEN

NOVITÀ



**MS-A**

ø gambo	Articolo	L	D	L <sub>1</sub>	L <sub>2</sub>	L <sub>3</sub>	D <sub>1</sub>	D <sub>2</sub>	Fig.
10	MS10-A 3- 90	90	3	27	10	—	6	8.7	1
	-A 4- 90	90	4	27	13	—	7	9.7	1
16	MS16-A 4-120	120	4	42	13	—	7	11.2	1
	-A 6-120	120	6	42	19	—	10	14.2	1
	-A 8-120	120	8	38	25	—	12	16.0	2
20	MS20-A 6-150	150	6	72	19	—	10	17.4	1
	-A 8-150	150	8	72	25	—	12	19.4	1
	-A10-150	150	10	57	31	63	14	20.0	3
	-A12-150	150	12	38	37	78	16	20.0	3